

AR Series

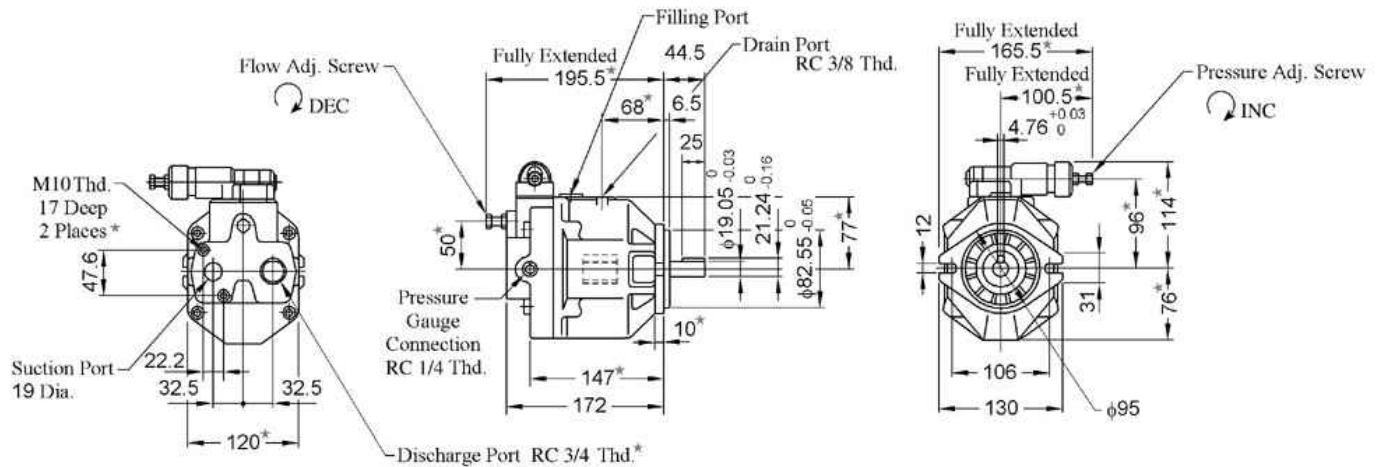


*Feature:

- For the control section, a unique cartridge structure is incorporated.
- The internal sliding surfaces, made of a wear resistant, seizure proof material, have been surfaced treated.
- As the main internal parts, such as the cylinder blocks and piston assemblies are used, are from the A16 and A22 pumps, the reliability is well - known and outstanding.
- A specially designed semi - cylindrical wash plate bearing structure, effectively reduces vibration and noise, whilst being more compact.
- The Housing is a compact and light mass design. $\Rightarrow 9.4\text{Kg}$

* Specifications

AR16 / 22 cm^3/rev	F	R	01	C	S	K	10
Series Number	Mounting	Direction of Rotation	Control Type	Pres. Adj. Range $\text{kgf/cm}^2(\text{MPa})$	Port Position	Shaft Extension	Design Number
AR16 (15.8 cm^3/rev)	F: Flange Mtg.	Viewed from Shaft End R: Clockwise (Normal)	01: Pressure Compensator Type	B:12~70 (1.2~7) C:12~160 (1.2~16)	None: Axial Port S: Side Port	K: Keyed S haft	10
AR22 (22.2 cm^3/rev)							10



DIMENSIONS IN MILLIMETRES

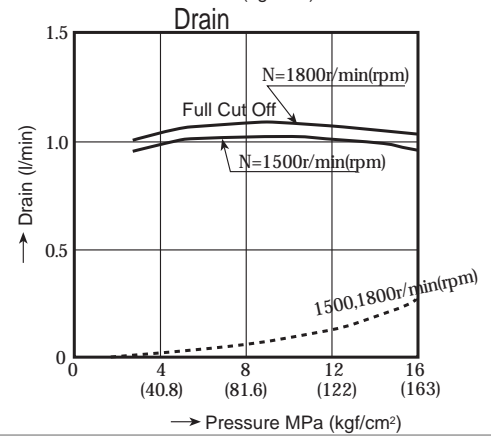
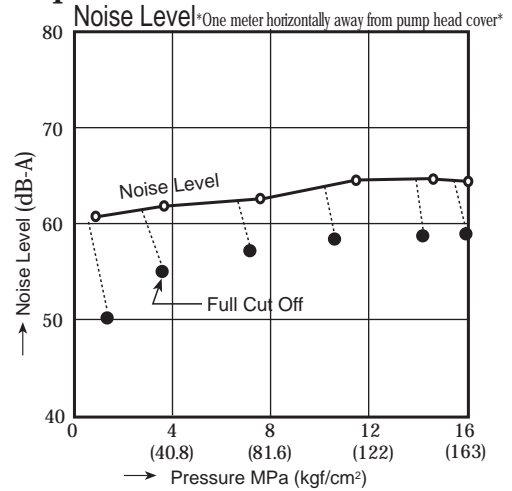
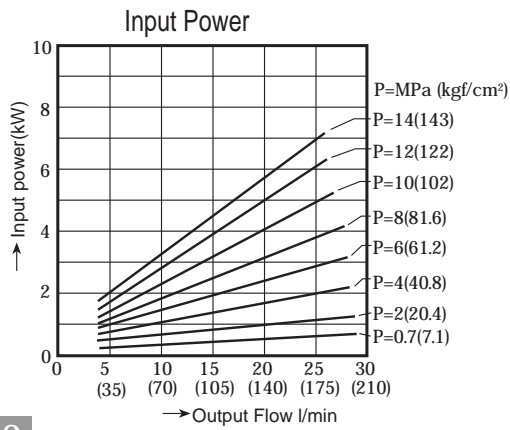
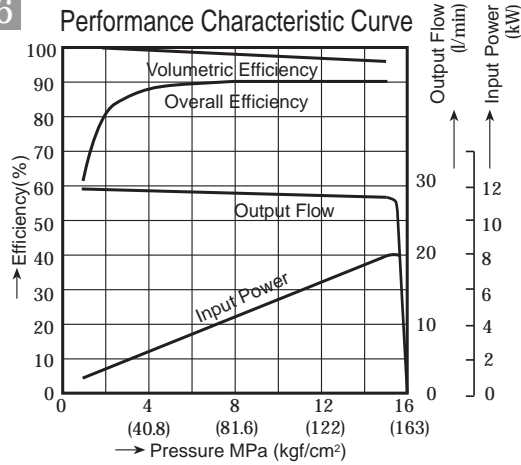
Mass: 9.4 Kg



AR Series Variable Displacement Piston Pumps

ISO VG32 Oils 50°C

AR16



AR22

